



IN-LINE STRAPPING MACHINES



ILS1300/1600

ILS1300/1600

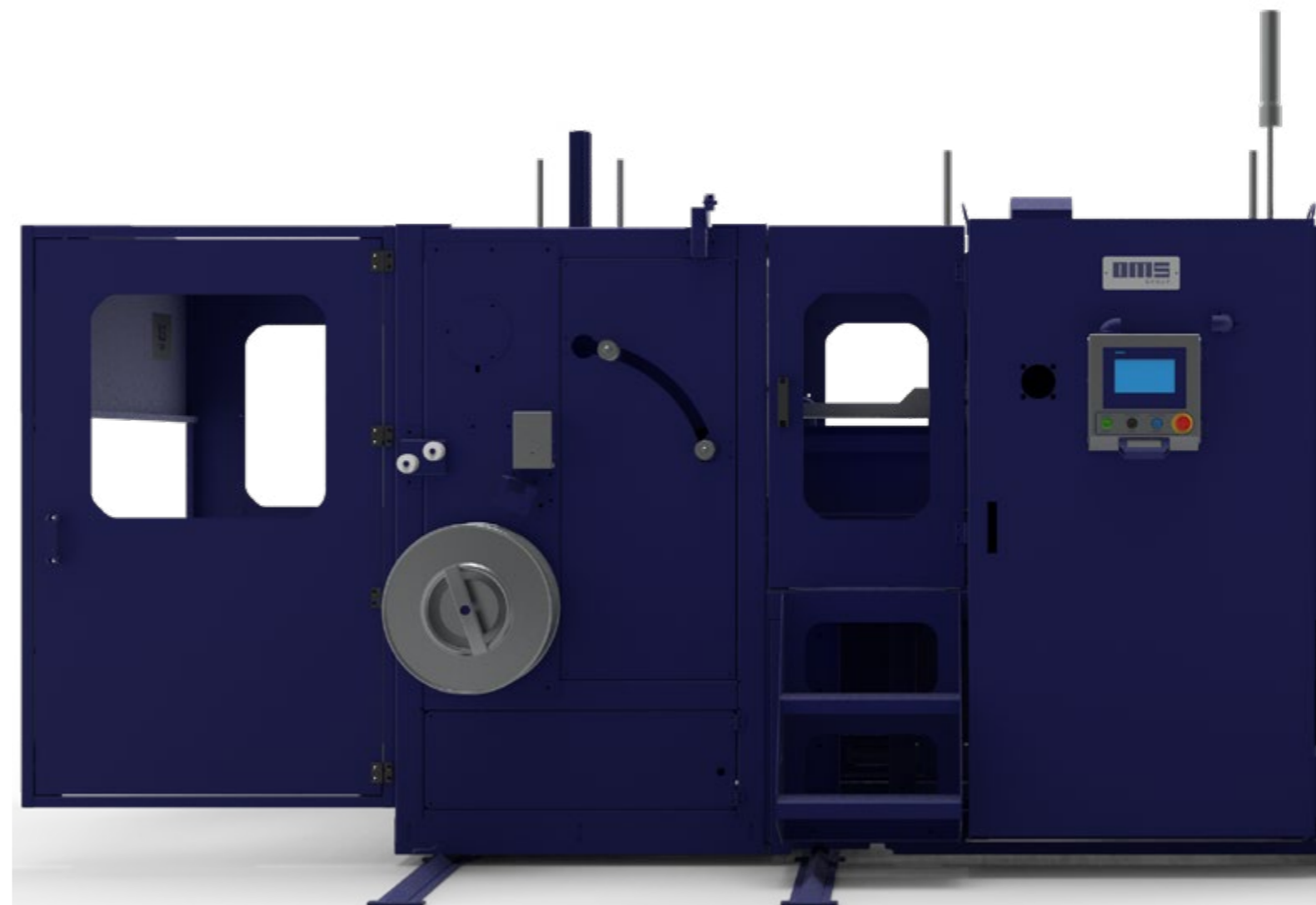


IN-LINE STRAPPING
MACHINES

EASY - FAST - EFFICIENT

The new series **ILS1300** and **ILS1600** specific for the **corrugated cardboard converting industry**, is designed to be installed on the outgoing side of casemaker and folding-glueing equipment for the application of straps in the direction of flow. In fact, after the pack of cardboard boxes comes out of the casemaker, it is conveyed, compacted sideways, and kept perfectly squared up to the strapping area. The range includes **two basic models, ILS1300 and ILS1600**, to **process different pack widths**.

IN-LINE



WHY BUY

HIGH PERFORMANCE
AND SPEED

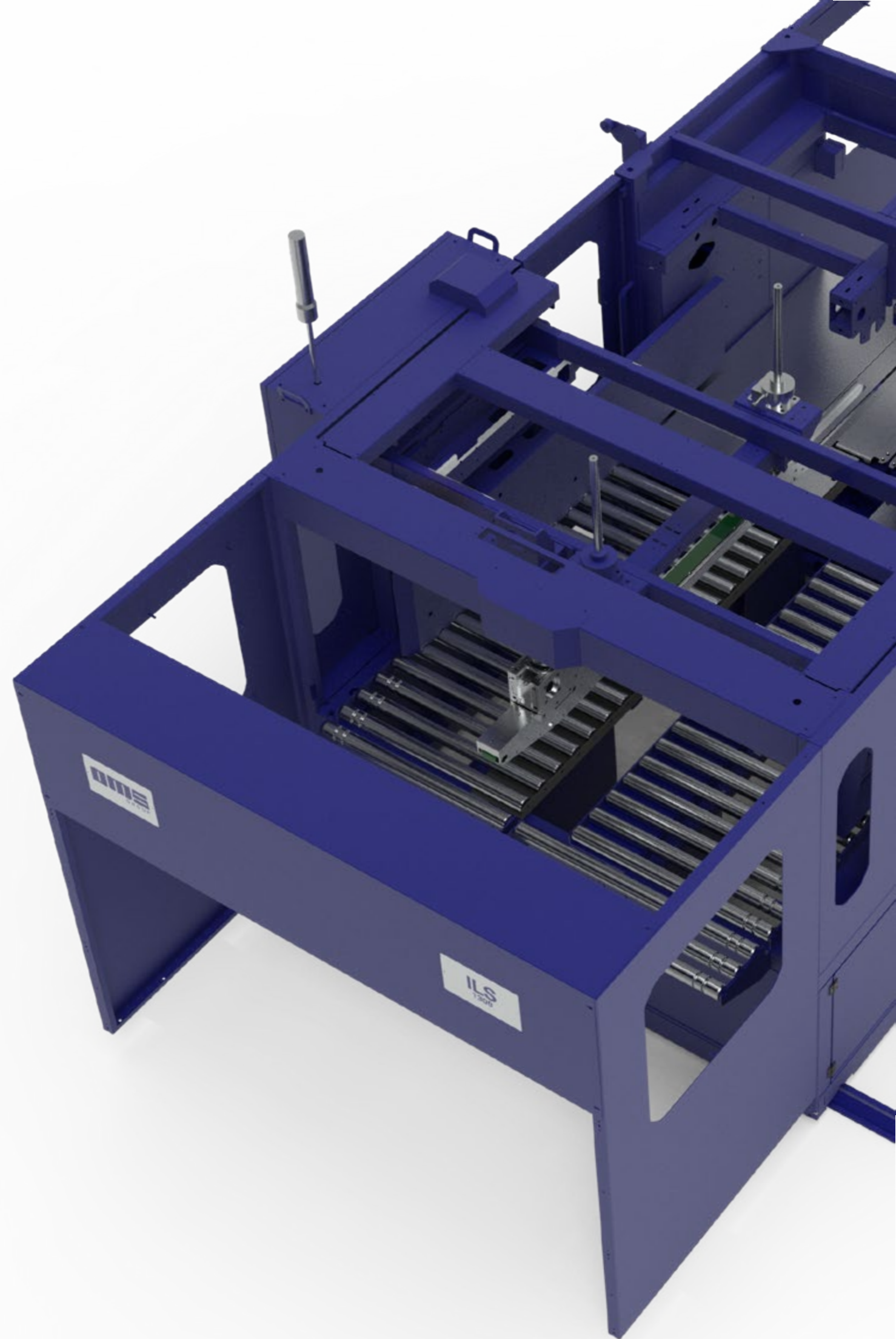
QUICK AND EASY
INSTALLATION

OPTIMIZED DESIGN

NOISLESS AND QUICK
MOVEMENT

USER FRIENDLY AND EASE
OF MAINTENANCE

SAFE AND DURABLE



FEATURES



Pneumatic press
stabilizes the package when
strapping

Side squaring device,
adjustable compression and
strapping positioning

**Upper motorized compression
belt** adjustable height
from HMI

Outfeed conveyor
with three working functions

In-line single head,
with easy access for
maintenance

Coil holder
with end of strap stop

Motorized side movement
for alignment to the casemaker

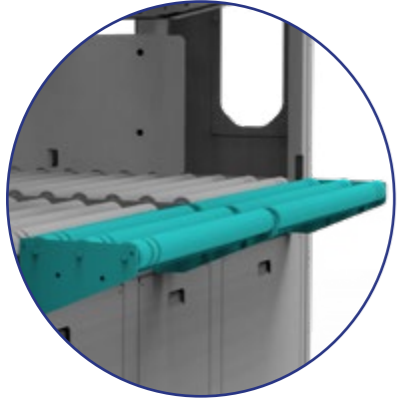
Machine HMI
Siemens KTP700

Double pusher,
for more speed and less
wearing

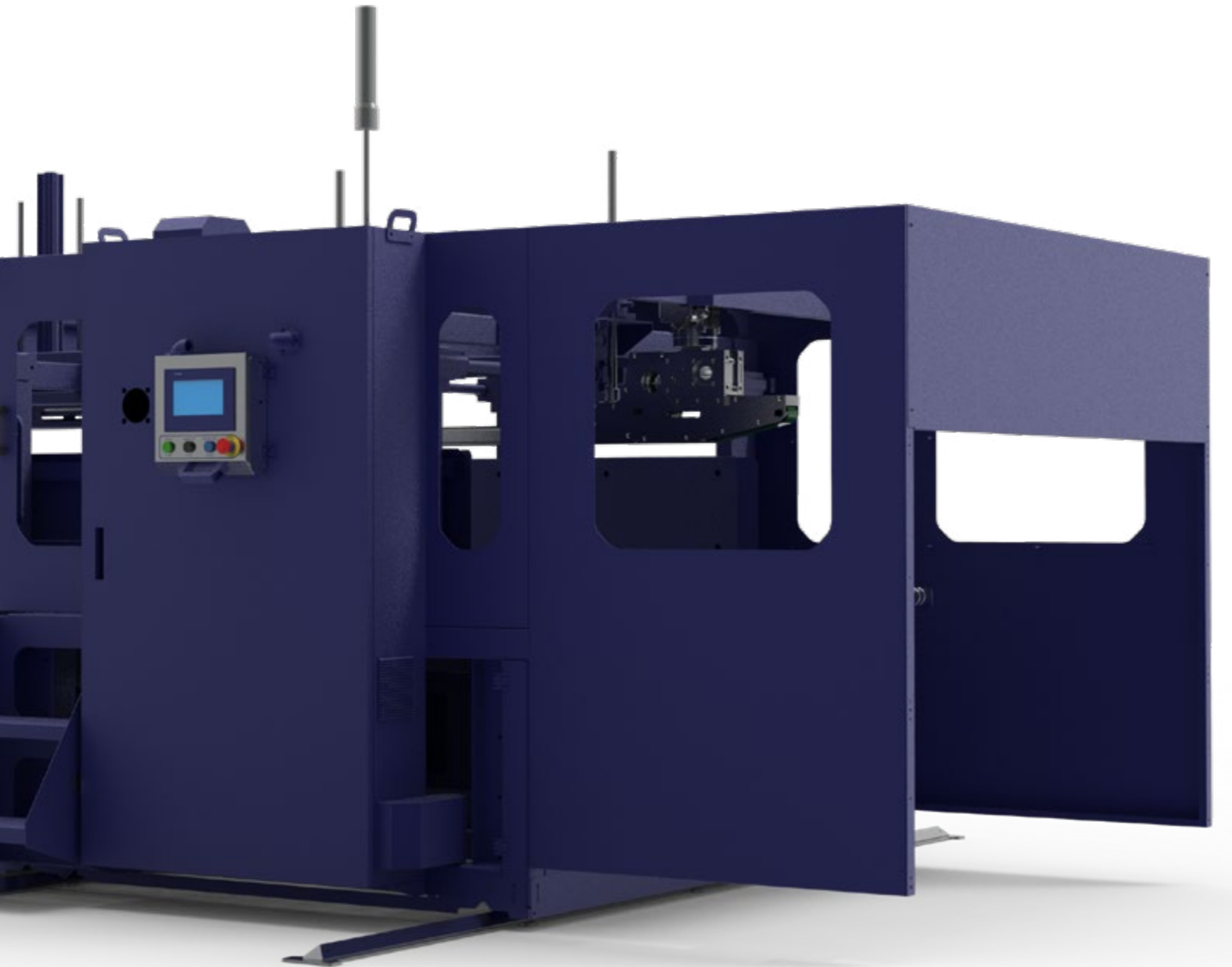
Driven rollers and belt
at machine entrance

Optionals

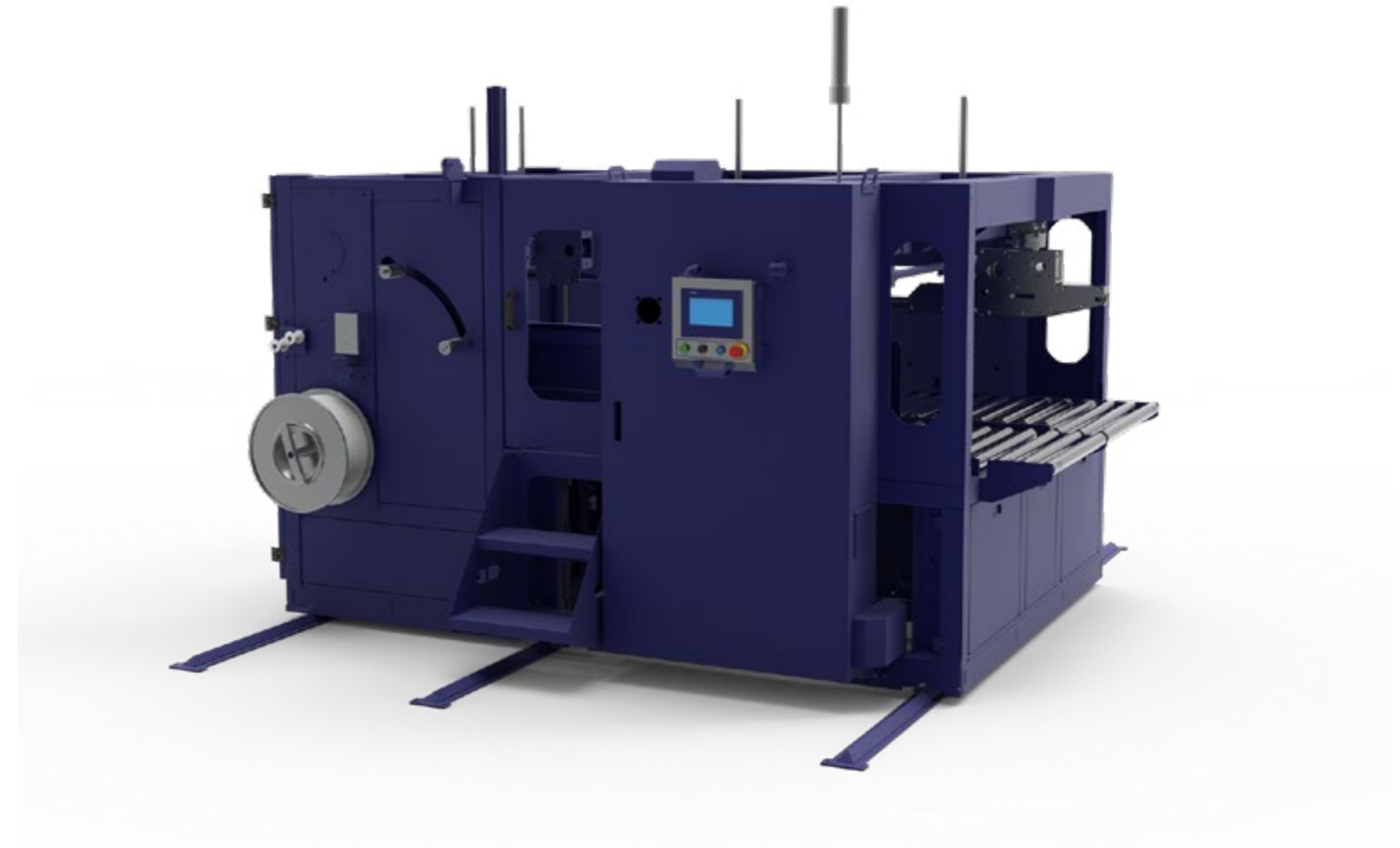
3-roller extension of the loading conveyor



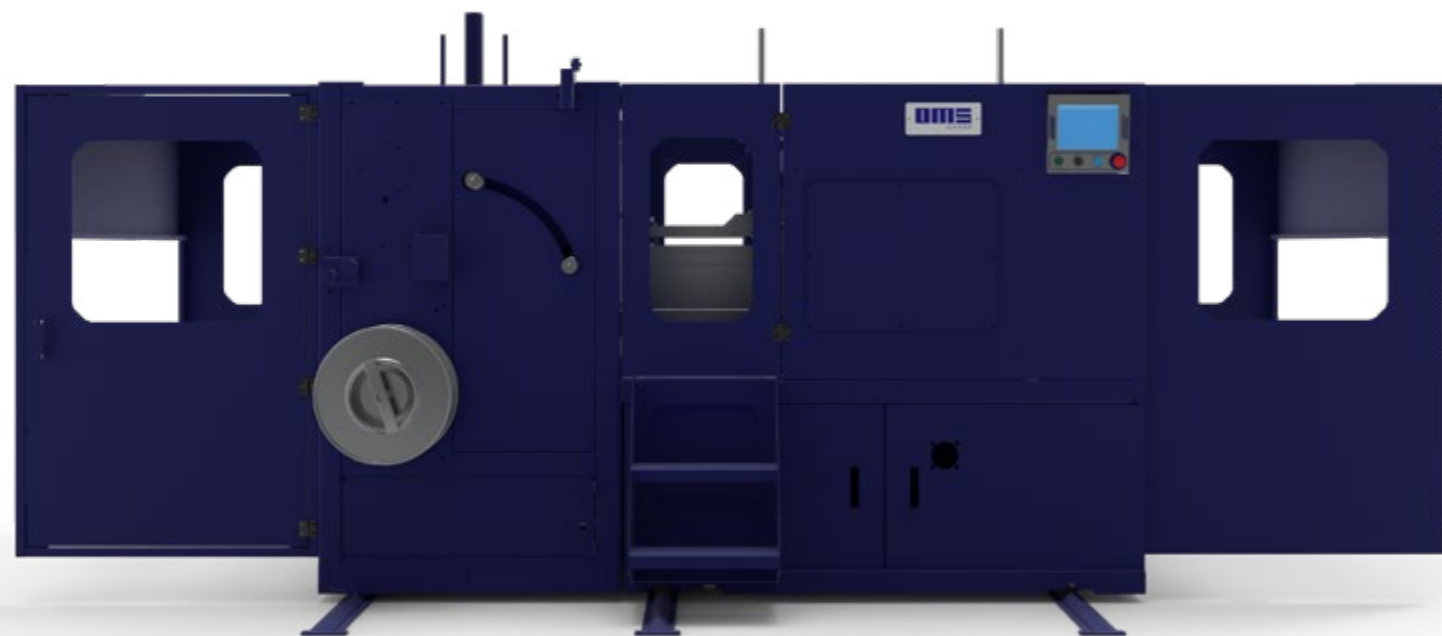
• **Automatic adjustment** based on dimensions received from the case maker



ILS1300



ILS1600



ILS1300/1600



IN-LINE STRAPPING
MACHINES

EASY - FAST - EFFICIENT



www.oms-group.com
info@oms-group.com

